



POTTS SCISSORS

15MM BEAD TIP SHARP FINE ANGLED BLADES



25°



45°



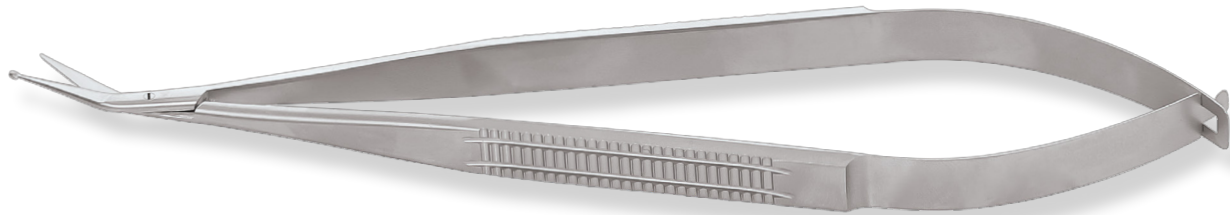
60°



90°



125°



SKU	Shaft Angle	Handle	Total Length	Alloy
SL0705.1	25°	Flat	6.75" (17cm)	Stainless Steel
SL0706.1	45°			
SL0707.1	60°			
SL0708.1	90°			
SL0709.1	125°			